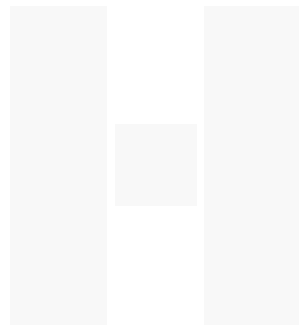


Heavy Contract Carpet and Tiles



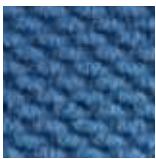
**Heckmondwike**  
Quality in every fibre



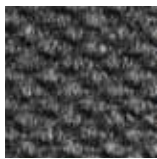
**B**

Bespoke

Entrance Area



Azure Blue



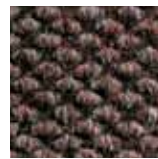
Bank Grey



Beige



Charcoal



Chocolate



Crystal Blue



Dolphin Blue



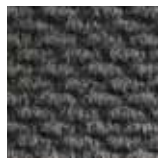
Emerald



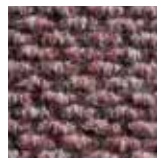
Lagoon



Maple



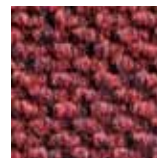
Mink



Moorland



Pale Olive



Red



Silver

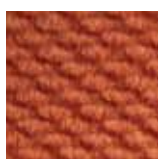


White

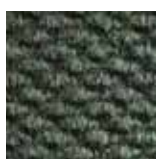
## Heckmondwike Bespoke Entrance Designs

Entrance Area

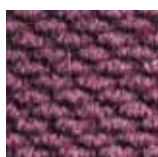
First impressions count. And whether you're a school that wants to extend a warm welcome to new pupils, or a company that wants to make a big impact with new clients, our bespoke entrance carpets are the answer. Shapes and logos can be created from any of our fibre bonded products and incorporated into a mat or inlaid into the floor. The most popular option is our Diamond range, with its hard wearing qualities and exclusive additional colours for bespoke design. Bespoke logos and designs can be created for areas up to 4m<sup>2</sup>.



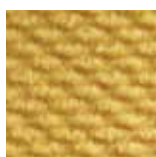
Flamenco



Green



Wine



Yellow

### A step-by-step example for Bespoke Entrance Design using Diamond

**Step 1** - Decide on your design

**Step 2** - Choose your colour from the 20 options

**Step 3** - Decide on the size and whether your design will be inset into an entrance or supplied as a loose lay mat.

We'll organise the rest.

For more information and advice call the sales office:

01924 406161 or email: [logodesigns@heckmondwike-fb.co.uk](mailto:logodesigns@heckmondwike-fb.co.uk)



BESA



Manufactured in the UK

E & OE

Heckmondwike FB reserves the right to change or modify product specifications without giving prior notice. Colours are limited to the print process and may differ slightly to the actual product.

05/2012

 **Heckmondwike**  
Quality in every fibre

Heckmondwike FB, A division of  
National Floorcoverings Ltd.  
Wellington Mills, Liversedge,  
West Yorkshire WF15 7FH

**Sales:** 01924 406161 - Admin: 01924 410544

**Free Fax:** 0800 136769

**sales@heckmondwike-fb.co.uk**

**www.heckmondwike-fb.co.uk**